

# Make a wooden Hedgehog House



## Tool Kit

- 12mm thick plywood (see cutting list).
- Hammer, saw and screwdriver.
- Approx 40 wood screws or nails.
- 2x long metal hinges for the lid (optional).
- A pencil and ruler.



## Where to put your hedgehog house

Place your hedgehog home on the ground, in a quiet spot of your garden against a wall or fence, within 5m of your home. If you put food out for hedgehogs, locate your box away from the feeding area. Ensure there are leaves nearby or inside for your hedgehog to use as bedding, or otherwise use pet hay.

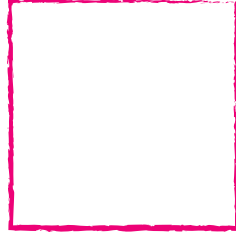


Illustration © Ceri Thomas 2018

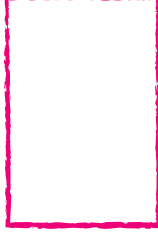
[www.helpforhedgehogs.co.uk](http://www.helpforhedgehogs.co.uk)

© 2018 Warwickshire Wildlife Trust  
Warwickshire Wildlife Trust is a registered charity (Number 209200)  
and a company limited by guarantee. Registered in England, Number 582247.

2x Lid and Base  
300 x 300mm



3x Sides  
300 x 200mm



1x Front  
300 x 200mm



104 x 125mm  
entrance hole

1x Internal Wind Break  
200 x 200mm

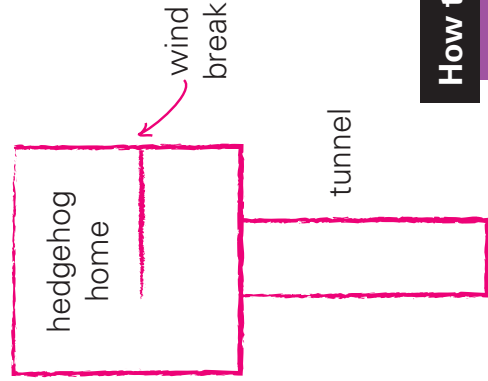


4x Tunnel  
300 x 100mm



## Top view

fence or wall



## Is a hedgehog at home?

Lightly wedge a twig diagonally across the tunnel entrance. If it's dislodged the next morning, and it isn't hibernation season, it's likely that you have a resident hedgehog!

## How to look after your hedgehog house

Clean out your hedgehog box in early April if it isn't occupied. Remove any bedding, wash the box out with boiling water and leave it outside to dry naturally.

## Let's build it!

1. Take the three side panels and the front panel and screw them together along their short sides, making sure that the entrance hole is open to the bottom.
2. Screw the base in place.
3. Position the windbreak 120mm from the entrance and secure in place by screwing through the base and one of the sides.
4. Take the two hinges and screw them to one of the sides, 40mm in from each corner.
5. Screw the top to the hinges.
6. Screw the four tunnel sides together along their longest sides to make a square tube.
7. Do not use creosote or any other form of wood treatment as this may be harmful to your new residents.